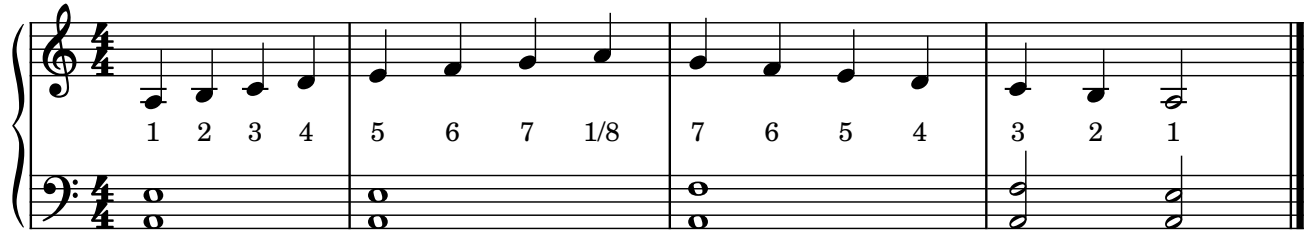


# Minor Scales LP1: The Basic Forms

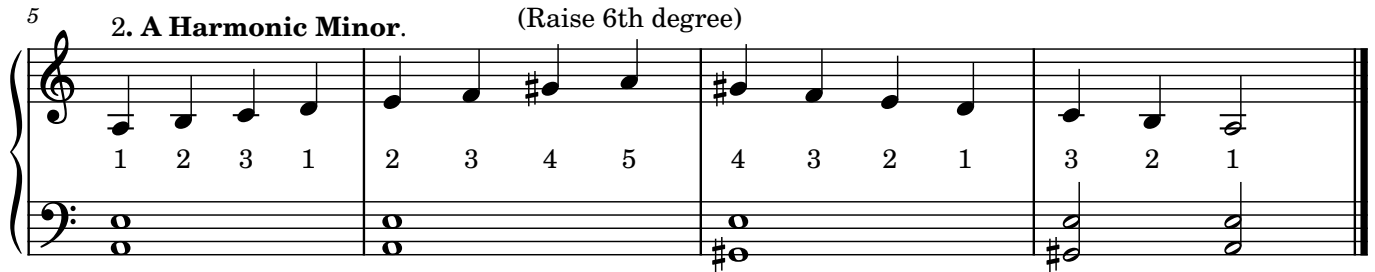
(The "modes" and "altered" shapes of minor)

JimO

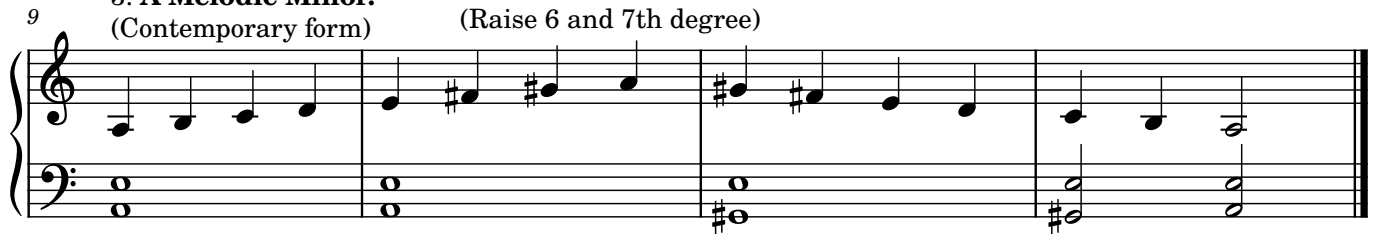
1. A "Natural" minor, "relative minor (to C major), AEOLIAN MODE.



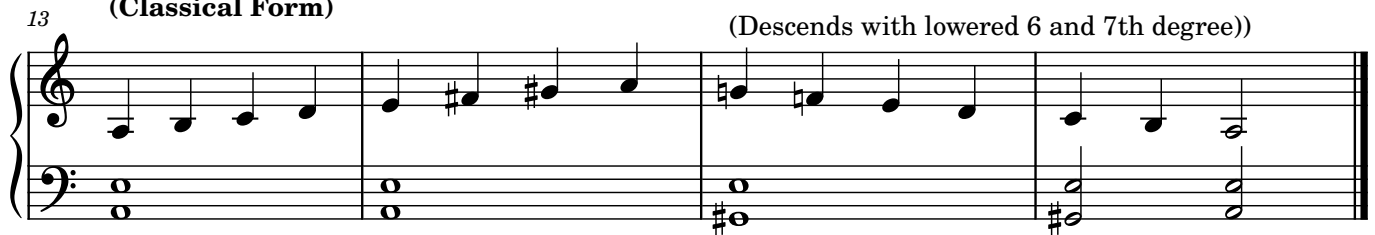
2. A Harmonic Minor. (Raise 6th degree)



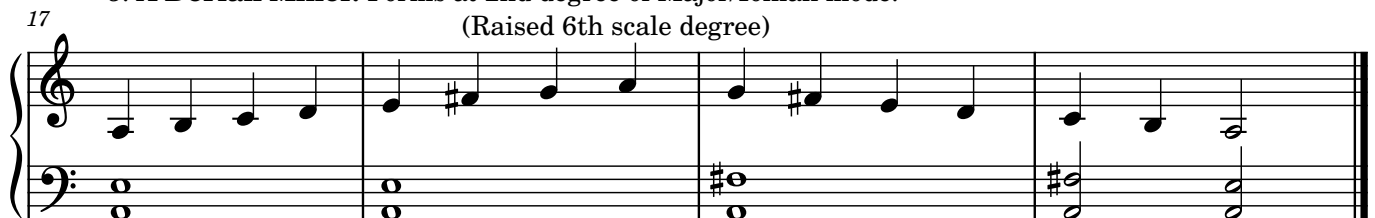
3. A Melodic Minor. (Contemporary form) (Raise 6 and 7th degree)



4. A Melodic Minor. (Classical Form)



5. A Dorian Minor. Forms at 2nd degree of Major/Ionian mode. (Raised 6th scale degree)



6. A Phrygian Minor. This mode contains a b2 scale degree. Popular in the music of Spain. (Lowered 2nd scale degree)

